

## Outcomes Framework for Solihull - Overview

October 2022

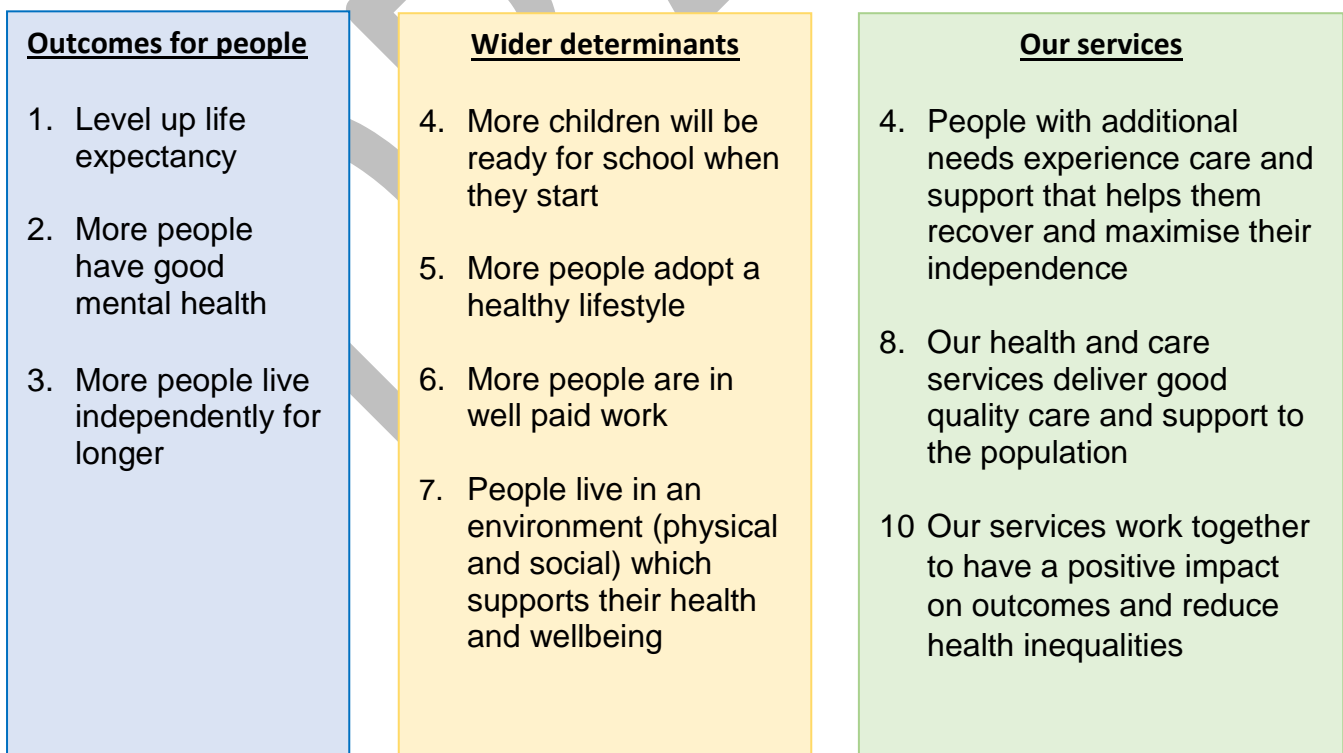
### BACKGROUND

In developing this framework we have considered the following documents

- The priorities within Birmingham and Solihull Integrated Care System's Inception Framework to:
  - Improve population health and healthcare
  - Tackle unequal outcomes and access
  - Enhance productivity and value
  - Support the broader social and economic development of Birmingham and Solihull
- Thriving Places 2021 and the importance of developing a place-based outcomes framework
- The BSOL Health Inequalities Strategy
- Solihull's Health and Wellbeing Strategy and Health Inequalities Strategy, the Council Plan and the Council's Inclusive Growth Framework

This framework will require refining over time, and this will be an iterative process.

### OUTCOMES



## DATA/METRICS CRITERIA

We have developed a set of criteria for the inclusion of metrics in our framework. We are currently engaging with subject specialists to ensure our metrics are fit for purpose.

We will include citizen-reported measures where appropriate. We will also ensure, where possible, that our data is broken down to compare the difference in the 20% most deprived areas and the average for the borough, enabling greater understanding of health inequalities.

In addition, we acknowledge that there are a number of local strategies and plans that support the delivery of these outcomes. A list of these strategies and how they map to our outcomes is shown at Appendix One.

## CONSULTATION AND ENGAGEMENT

To develop this framework we have engaged with a range of partners through a number of programme boards (eg Mental Health POD, Ageing Well etc), the Solihull Intelligence and Insights Group, Solihull Together and the Solihull Health and Wellbeing Board and Health Inequalities Implementation Group. In addition, we have worked closely with Healthwatch and colleagues working in housing, employment, environment and public health.