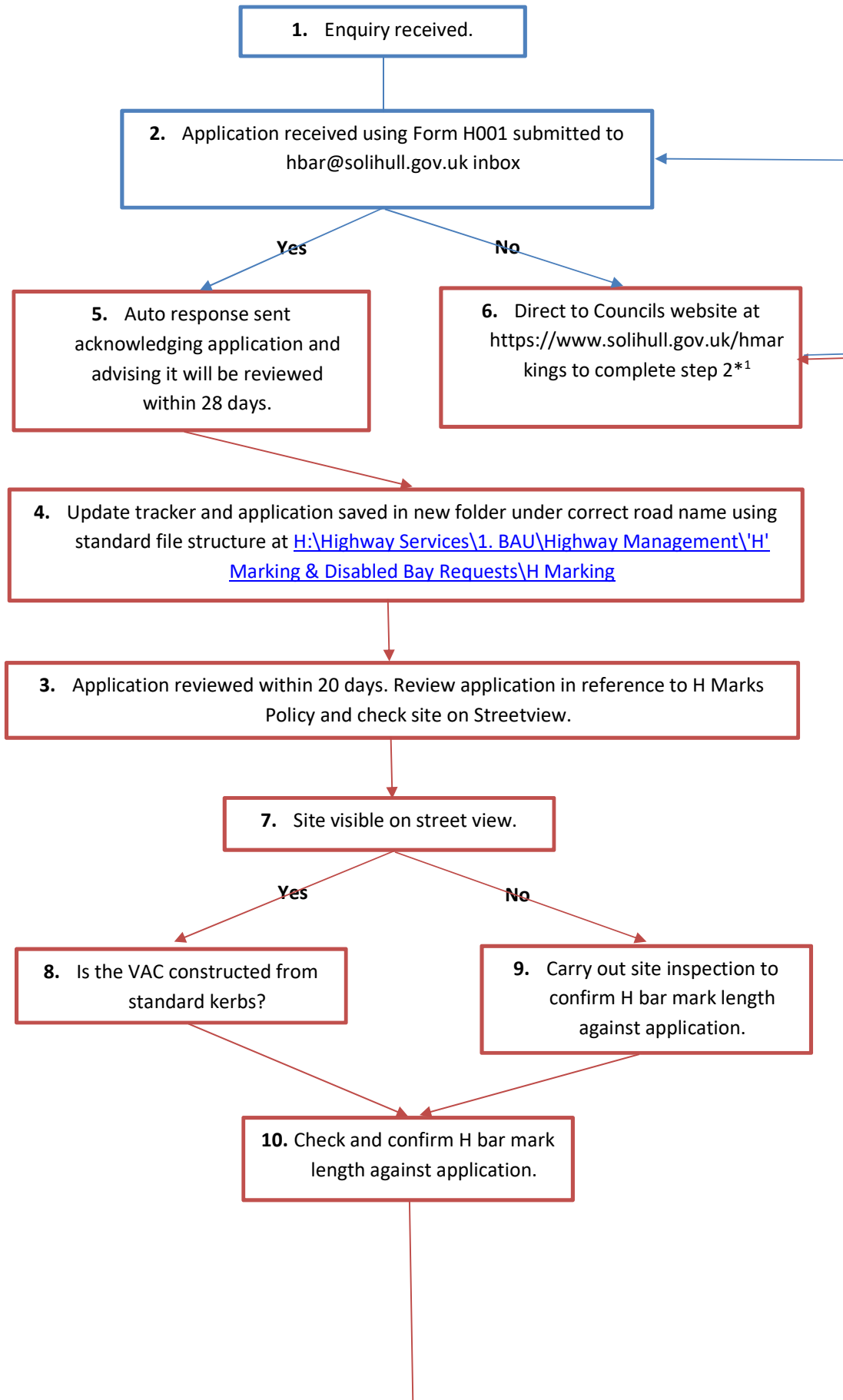
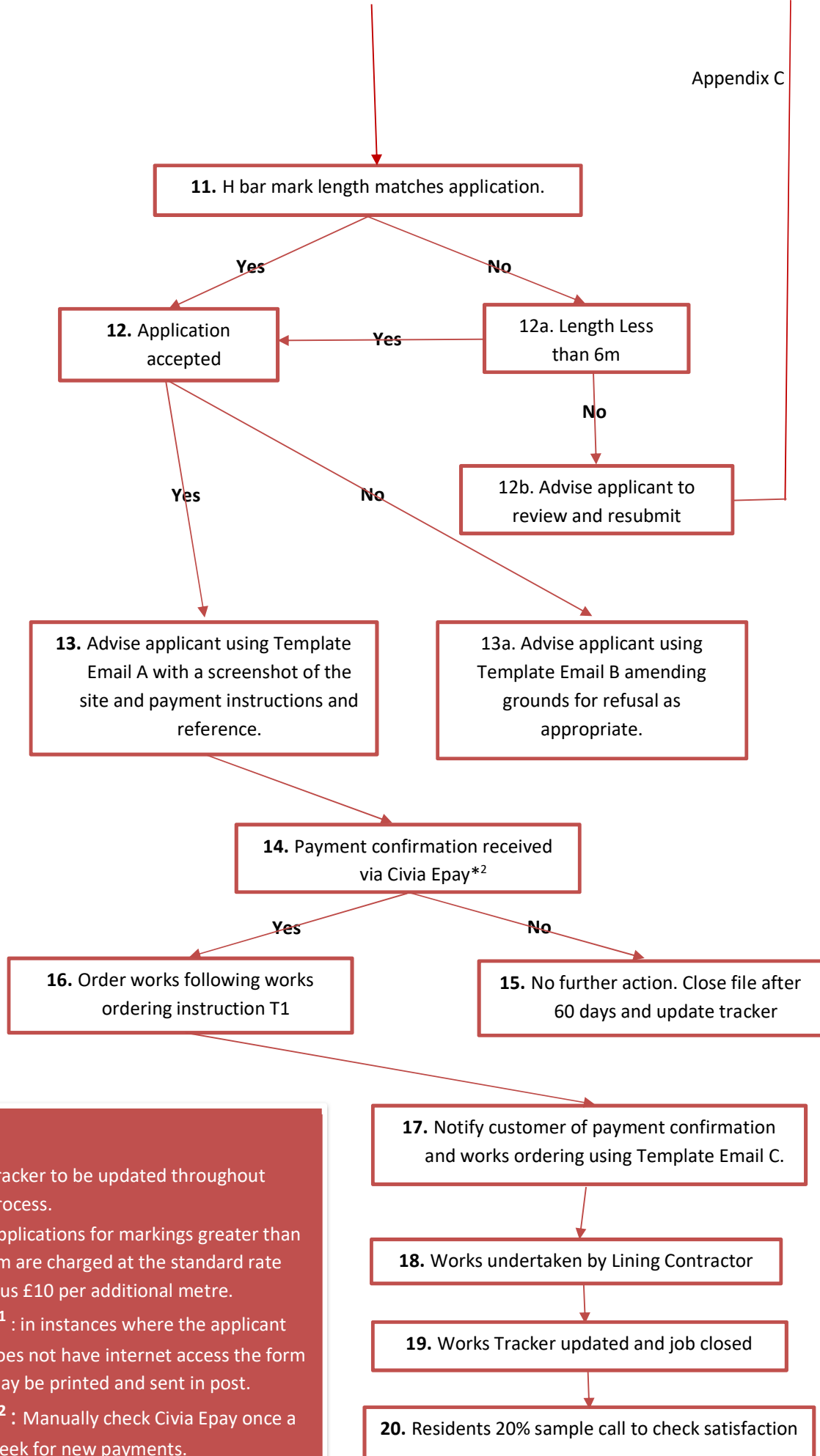


## H Bar Process for application process for H Bars less than 6m in length



**Notes:**

- Tracker to be updated throughout process.
- Applications for markings greater than 6m are charged at the standard rate plus £10 per additional metre.
- \*<sup>1</sup> : in instances where the applicant does not have internet access the form may be printed and sent in post.
- \*<sup>2</sup> : Manually check Civia Epay once a week for new payments.